

Spring Seeding Mittens



A charted mitten pattern where the seeding is on both sides. With Spring Seeding the left and right mitten are constructed the same.

Finished measurements are 10 inches from edge of cuff to tip of fingers. Laying flat they measure 3.5 inches across knuckles. Fits a medium sized hand snugly.

Materials

Knit Picks Palette Clover (green) 120 yds

Knit Picks Palette Snow (white) 75 yds

Needles/Gauge

Size 2 dpns

Gauge with size 2 needle is: 7 sts per inch in the round in pattern.

Other Supplies

Yarn needle. Stitch markers. Scrap yarn. Tape measure.

Instruction

Ribbed Cuff: with MC, and size 2 needles, CO 52, PM, and join in the round.

[k2, p2] to the end of the round. Repeat this row until the cuff measures 2 inches.

Set up: k26, PM, k1, PM k25

Begin working charts. Carry the floats when there are more than 4 stitches in a row of either color. Column 27 is where the gusset is placed. You will knit to the first marker, knit from the Gusset chart to the second marker, then knit the rest of the row.

Once you have completed row 19, knit the first 26 stitches of line 20, place the 19 stitches of the gusset on scrap yarn. PM, M1 stitch, and join in the round. Continue to the end of line 20. Carry on with the rest of the chart.

Place the last 9 sts of the front on one needle and the last 9 sts of the back on another needle. Join these with the kitchener stitch, pulling the tail to the inside of the mitten at the end.

Thumb: place the 19 sts onto the size 2 dpns. PM. Using MC and working right to left, pick up 3 sts from the space where the join was made in the mitten. (These are marked with a P on the thumb chart.) Continue working in the round until the end of the chart.

Decrease of thumb:

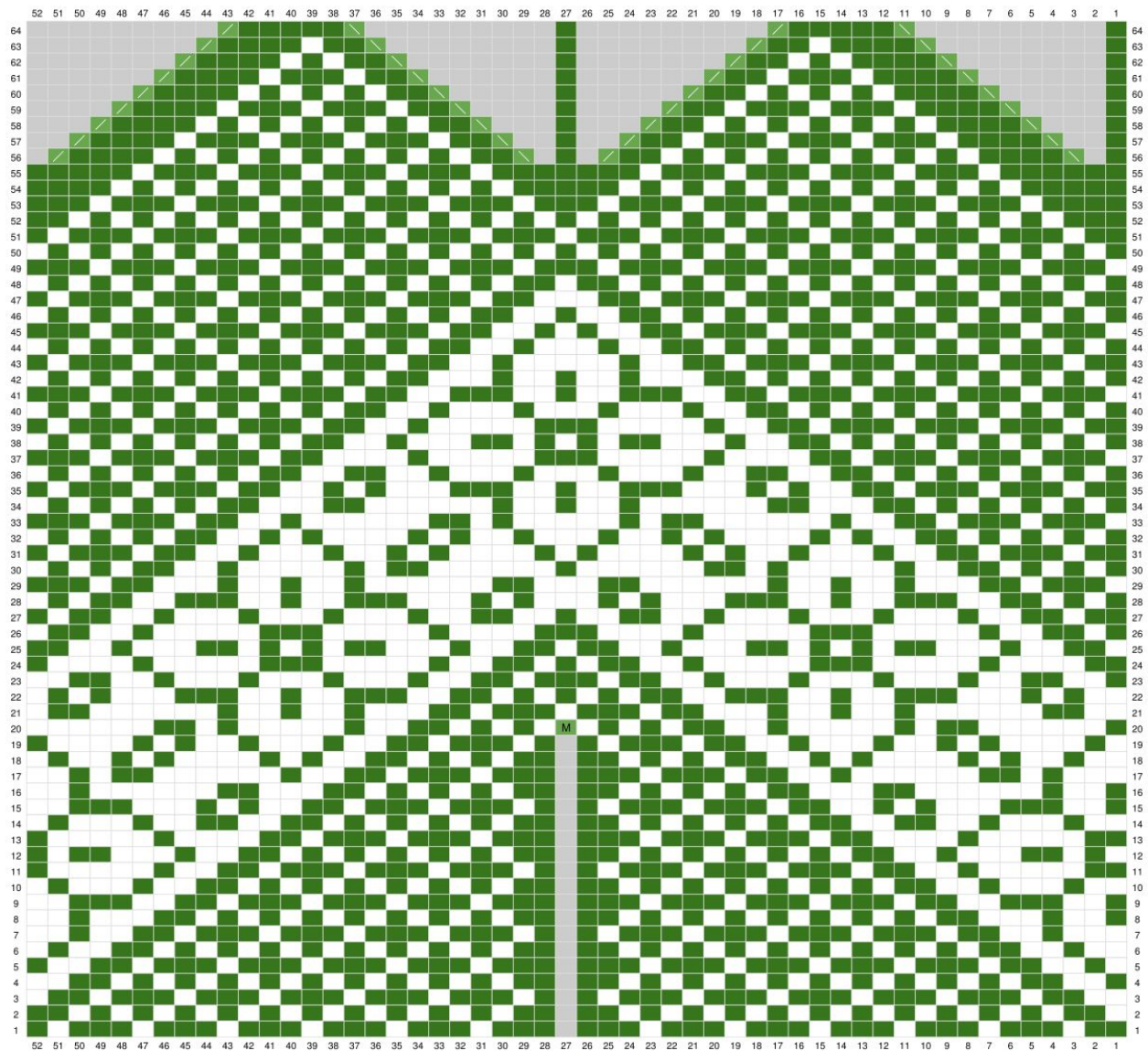
Row 1: k1, [k2tog, k1] to end

Row 2: [k2tog] 7 times, k1

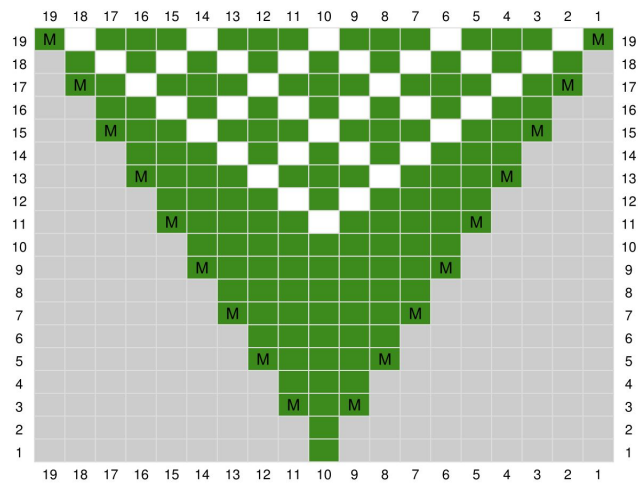
Pull the last 8 sts through on a yarn needle and pull yarn to the inside of the thumb.

Knit the second mitten the same as the first. Once you have completed both mittens, weave in all the ends and block.

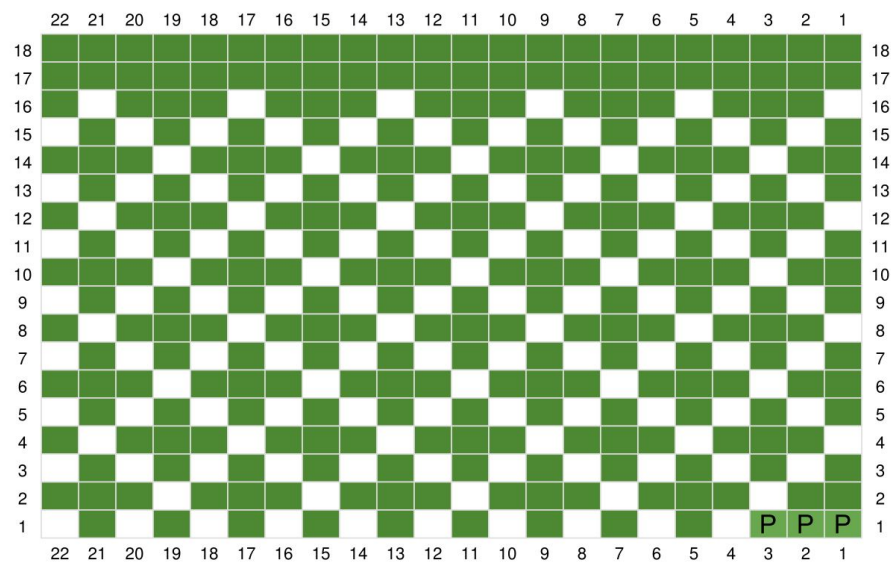




Spring Seeding FRONT and BACK



Spring Seeding GUSSET



Spring Seeding THUMB

- White
- Green
- No Stitch
- M Make 1 in Green
- / SSK
- \ k2tog
- P Pick Up Stitch