

# Rock Climbing Hat

---



A charted pattern for a cozy wool hat. Fits heads that are 22-24 inches around.

## Materials

All yarns are Knit Pick Palette fingering weight 100% wool.

Main Color (MC) - Larch Heather	120 yds
Rope - Orange	15 yds
Rope contrast - Lingberry	15 yds
Quick Draw/sling - Tarragon	20 yds
Carabiner - Silver	25 yds

## Supplies

Size 2 - 16" circular needles, Size 3 - 16" circular needles, and Size 3 dpns.  
Yarn needle. Stitch markers.

**Gauge** with size 3 needles in pattern, in the round: 7 sts per inch.

## Instructions

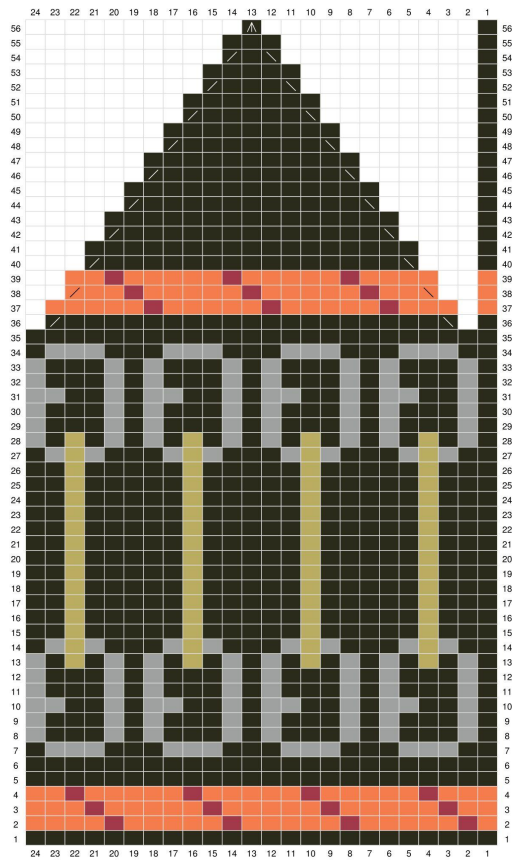
With size 2 circular needles and using MC, C.O. 144 sts. PM and join in the round.

Row 1 (k2, p2) repeat to end of round.

Repeat row 1 until ribbing measures 1 inch.

Set up row: Change to size 3 circular needles and knit one round.

Start chart, repeat each row 6 times (144sts) Place markers as needed. Use the double pointed needles when you are shaping the crown. After you finish row 56, cut an 8 inch tail. Using the yarn needle, run the tail through the last 12 sts, tie off and pull tail through to the inside of the hat. Weave in all ends. Block on a head form or balloon. If using a balloon, blow it up 1 inch smaller than the head size of the person planning to wear the hat.



- k - Larch Heather
- k - Orange
- k - Lingonberry Heather
- k - Silver
- k - Lichen
- k2tog - Larch Heather
- SSK - Larch Heather
- k2tog - Orange
- SSK - Orange
- center double decrease - Larch Heather
- No stitch



Top of Rock Climbing Hat