

# Foreign Accents Hat

---



A charted pattern of Fair Isle fun! Fits heads that are 22-24 inches around.

## Materials

Knit Picks Palette (fingering weight 100% wool yarn)

Hollyberry	36 yds
Mai Tia Heather	41 yds
Orange	11 yds
Masala	30 yds
Kumquat	30 yds
Asphalt	46 yds
Cornmeal	25 yds
Canary	11 yds

## Supplies

Size 2 - 16" circular needles, Size 3 - 16" circular needles, and Size 3 dpns. Yarn needle. Stitch markers.

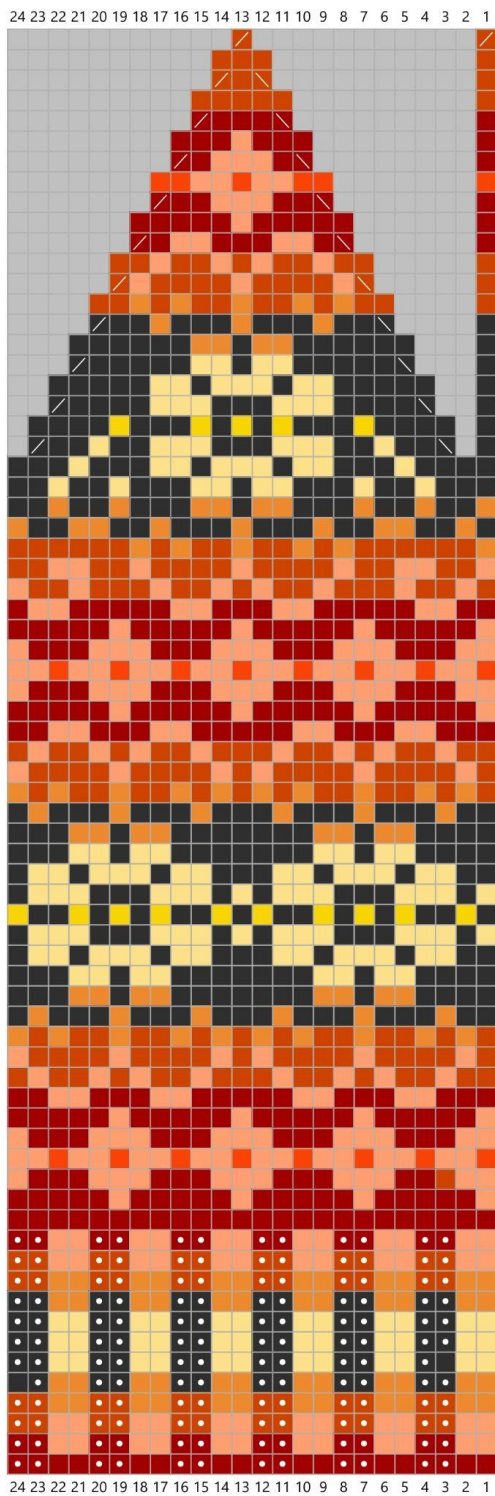
**Gauge** with size 3 needles in pattern, in the round: 7 sts per inch.

## Instruction

With size 2 circular needles and using Hollyberry, C.O. 144 sts. PM and join in the round.

Start chart, repeat each row 6 times (144sts) Place markers as needed. Work rows 1-12 for the corrugated ribbing.

Switch to size 3 needles and continue on row 13. Work your way up the chart then use the size 3 dpns when your work does not fit on the circulars. After you finish row 71, cut an 8 inch tail. Using the yarn needle, run the tail through the last 12 sts, tie off and pull tail through to the back of the hat. Weave in all ends. Block on a head form or balloon. If using a balloon, blow it up 1 inch smaller than the head size of the person planning to wear the cap.



Key

- Hollyberry
- Mai Tai Heather
- Orange
- Masala
- Kumquat
- Asphalt
- Cornmeal
- Canary
- no stitch
- purl
- ssk
- k2tog