

# In the Weeds Hat

---



## Materials

Knit Picks Palette (fingering weight  
100% wool yarn)

Ash	30 yds
Bark	36 yds
Clover	30 yds
Caper	25 yds
Lichen	5 yds
Mist	25 yds
Cream	15 yds
Green Tea Heather	20 yds
Spearmint	20 yds

## Supplies

Size 2 - 16" circular needles, Size 3 - 16" circular needles, and Size 3 dpns.  
Yarn needle. Stitch markers.

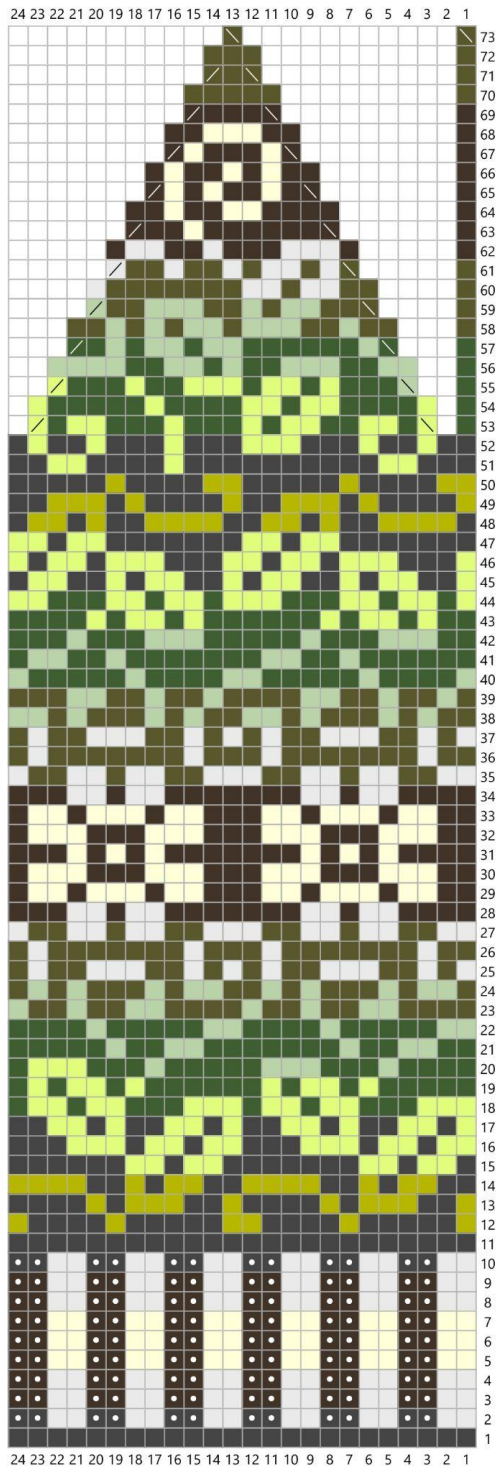
**Gauge** with size 3 needles in pattern, in the round: 7 sts per inch.

## Instruction

With size 2 circular needles and using Ash, C.O. 144 sts. PM and join in the round.

Start chart, repeat each row 6 times (144sts) Place markers as needed. Work rows 1-10 for the corrugated ribbing.

Switch to size 3 needles and continue on row 11. Work your way up the chart then use the size 3 dpns when your work does not fit on the circulars. After you finish row 73, cut an 8 inch tail. Using the yarn needle, run the tail through the last 12 sts, tie off and pull tail through to the back of the hat. Weave in all ends. Block on a head form or balloon. If using a balloon, blow it up 1 inch smaller than the head size of the person planning to wear the cap.



Key

- Ash
- Bark
- Clover
- Caper
- Lichen
- Mist
- Cream
- Green Tea Heather
- Spearmint
- purl
- / k2tog
- \ ssk
- No Stitch