

Icy Flowers Mittens



Fancy mittens with long tight cuffs. Knitted from charts using only 2 color strands at a time.

Sizing

One size. Fits a medium sized hand. Finished measurements: 13 inches from cuff to fingertips. Laying flat they measure 3 ¼ inches across knuckles.

Materials

All yarns are Knit Pick Palette 100% wool, fingering wt

| | |
|----------|---------|
| Ash (MC) | 107 yds |
| Navy | 41 yds |
| Black | 20 yds |
| Bluebell | 76 yds |
| White | 46 yds |



Needles/Gauge

Size 2 dpns, Size 1 dpns

Gauge with size 2 needle is: 7 sts per inch in the round in pattern.

Other Supplies

Yarn needle. Stitch markers. Scrap yarn.

Instructions

For both Left and Right mitten cuff: With size 2 needles and MC, C.O. 56 sts, PM, join in the round.

Row 1: k all sts

Row 2: p all sts

Row 3: k all sts

Row 4: p all sts

Row 5: k all sts

Start Chart A, working chart 4 times per round. (56 sts) After completing the chart knit 1 round plain with MC.

Switch to Size 1 needles and begin Chart B repeating the 4 stitches to end of row creating the corrugated ribbing. After completing Chart B, switch to Size 2 needles and work 1 round plain with MC as such: k2tog, k26, k2tog, k26. (54 sts)

From here on, the Left and Right are constructed differently. For the Right mitten you will work the charts in this order: C then E (with D inserted in E). For the Left mitten you will work the charts in this order: E (with D inserted in E) then C.

Right Mitten:

With Size 2 needles, start Chart C on line 1. Follow Chart C for 27 sts, PM, knit 1st stitch of line 1 of Chart E. Now insert Chart D (thumb gusset) before moving on the second stitch of Chart E line 1. (This thumb gusset insertion is marked by an orange line on the chart.) PM then continue working from Chart E. Move on to line 2 of Chart C, then line 2 of Chart E where you add the thumb gusset stitches from Chart D between 1st and 2nd sts, then finish row 2 of Chart E. Continue working from the 3 charts in this order for 19 rows.

After 19 rows of working all charts put 19 sts of the thumb gusset on scrap yarn, and continue with Chart C and Chart E only, knitting in the round. Once you are done with the charts, put the first 11 sts on one needle and the second 11 sts on a second needle and work these off with a kitchener stitch.

Thumb: place the 19 sts onto size 2 dpns. Working from Chart D, start on line 20 with the pick up st from the body of the mitten. Work in the round until the end of the chart. Knit 1 more round with MC. To close the thumb use MC and k2tog all around. With the last 10 sts, pull the yarn through with a yarn needle, tie off and pull yarn to inside of thumb.

Left Mitten:

With Size 2 needles, start Chart E on line 1. Follow Chart E for 26 sts, PM, insert Chart D (thumb gusset) before moving onto the last stitch of Chart E line 1. (This thumb gusset insertion is marked by a pink line on the chart.) After you do the last st of line 1 Chart E work line 1 of Chart C. Then move on to line 2 of Chart E where you add the thumb gusset stitches from Chart D between 26th and 27th sts, then finish row 2 of Chart C. Continue working from the 3 charts in this order for 19 rows.

After 19 rows of working all charts put 19 sts of the thumb gusset on scrap yarn, and continue with Chart E and Chart C only, knitting in the round. Once you are done with the charts, put the first 11 sts on one needle and the second 11 sts on a second needle and work these off with a kitchener stitch.

Work left thumb same as right.

Weave in all ends and block.

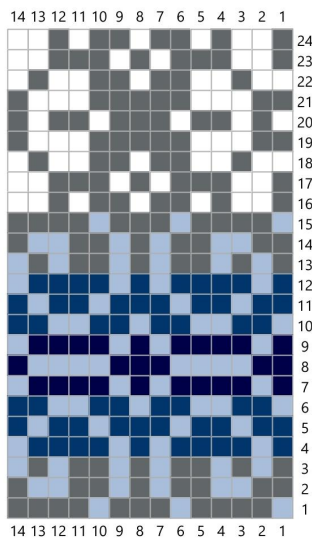


Chart A

- Key
- Ash (MC)
 - Bluebell
 - White
 - Navy
 - Black
 - no stitch
 - purl
 - k2tog
 - ssk
 - Chart D inserted Right Hand
 - Chart D inserted Left Hand
 - m1 right leaning
 - m1 left leaning
 - pick up stitch

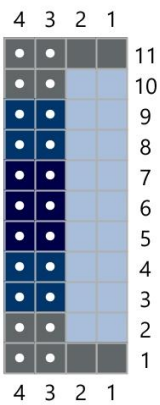


Chart B

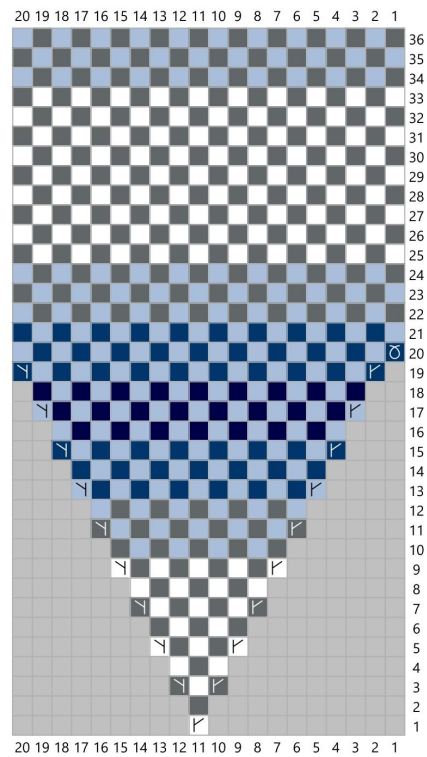


Chart D

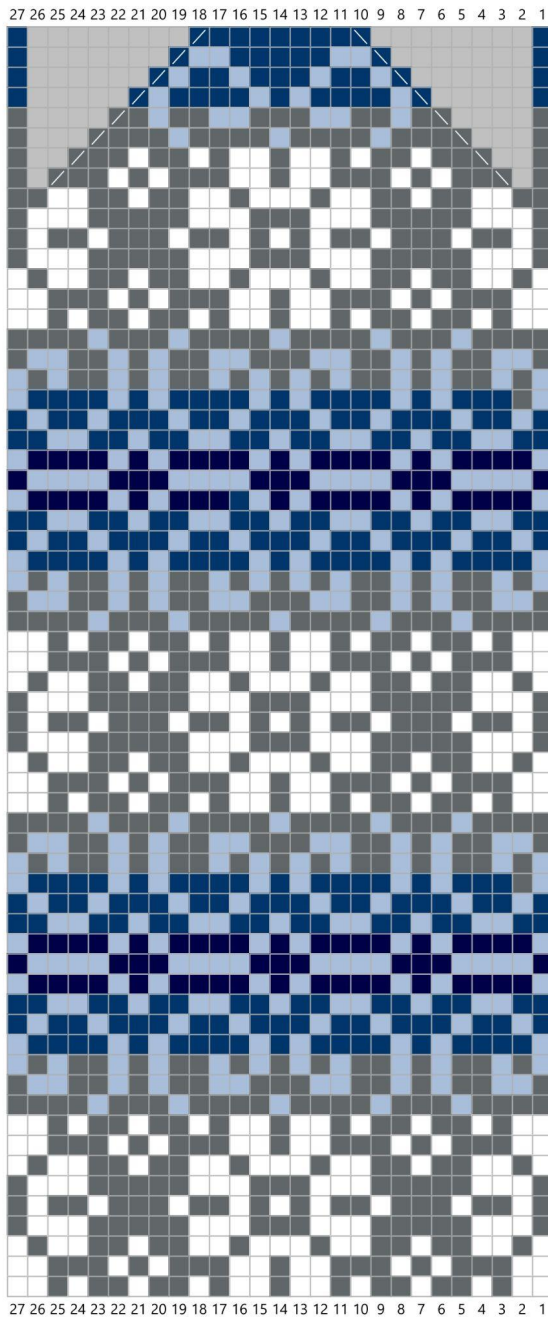


Chart C

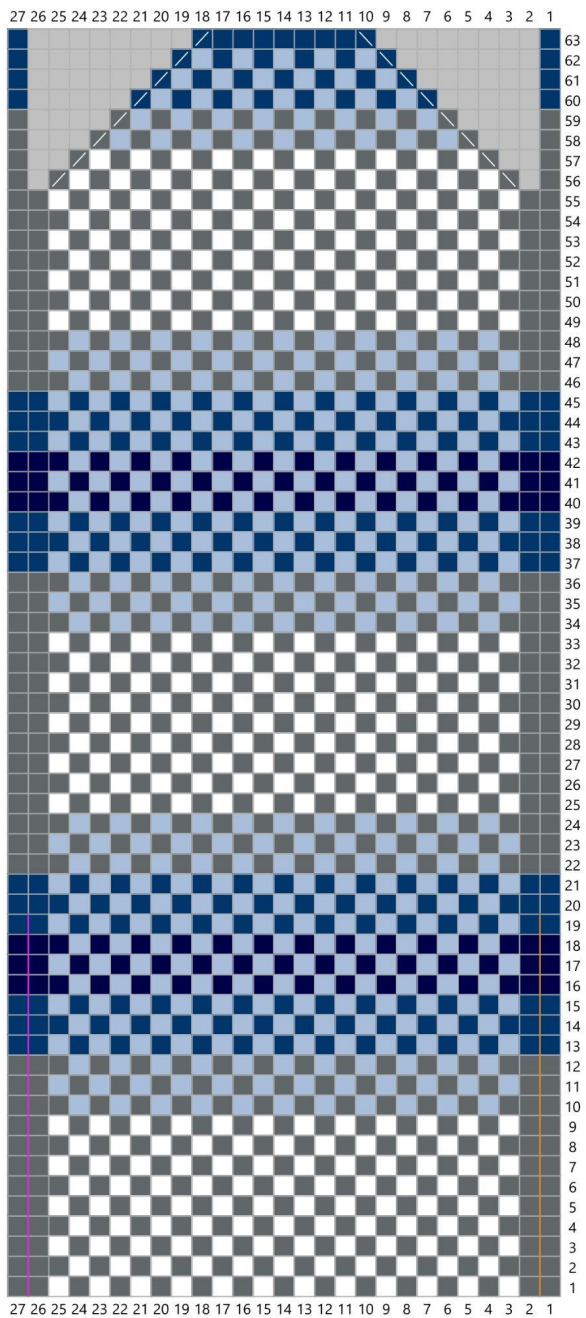


Chart E