

Hibernus Mittens



Fancy mittens with a Latvian Braid. Knitted from charts using only 2 color strands at a time.

Sizing

One size. Fits a medium sized hand. Finished measurements: 10 inches from cuff to fingertips. Laying flat they measure 3 ½ inches across knuckles.

Materials

All yarns are Knit Pick Palette 100% wool fingering weight

Celadon Heather (MC)	80 yds
Rainforest Heather	25 yds
Finnley Heather	51 yds
Asphalt Heather	46 yds
Lingonberry Heather	15 yds

Needles/Gauge

Size 1 dpns, Size 2 dpns

Gauge with size 2 needle is: 7 sts per inch in the round in pattern.

Other Supplies

Yarn needle. Stitch markers. Scrap yarn.

Instructions

Cuffs: For both left and right mitten, using MC and Size 1 needles, C.O. 52 sts, PM, and join in the round. Work a 2X2 ribbing as such: Row 1: (k2, p2) repeat to end of round. Repeat this row until the cuff measures 2 inches. Switch to size 2 needles. Knit set up row: k1, M1R, k 27, M1R, k24. (54 sts)

Lativan Braid: Color A is Rainforest Heather, Color B is Finnley Heather

Row 1: (k 1 Color A, k 1 ColorB) repeat to end of round.

Row 2: Move both strands to the front of the work. (All sts in rows 2 and 3 are purled over the same color as the previous row.) Starting with Color A, pull the yarn up and purl. Now using Color B, bring under the last st and purl. Alternate these two sts for the row. Your yarn will twist up. Do not try to untwist because it will naturally do so on the next row.

Row 3: Work the 1st st by pulling Color A *under* the last st and purl. (This is the only one in this row that is pulled from under the other.) Then work the next st in Color B, pull the yarn OVER the last st and purl. The 3rd st is also worked by puller OVER the last st and purl. Continue bringing each yarn over the last and purl to the end of the row. Your yarn will untwist as you do this row. Pull the yarns to the back at the end of the row. (You will weave them in later.)

Row 4: Knit one row in MC

From here on, the Left and Right are constructed differently. For the Right mitten you will work the charts in this order: A, B, C. For the Left mitten you will work the charts in this order: C, B, A. All charts are worked with size 2 needles.

Right Mitt:

Start Chart A on line 1. Follow Chart A for 27 sts, PM, knit Chart B line 1. PM then continue to line 1 of Chart C. Move on to line 2 of Chart A, then Chart B, then Chart C. Continue working from the 3 charts in this order for 19 rows.

After 19 rows of working all charts put 19 sts of the thumb gusset on scrap yarn, and continue with Chart A and Chart C only, knitting in the round. Once you are done with the charts, put the first 7 sts on one needle and the second 7 sts on a second needle and work these off with a kitchener stitch.

Thumb: place the 19 sts onto size 2 dpns. Working from Chart B, start on line 20 by picking up stitch from the body of the mitten. Work in the round until the end of the chart. To close the thumb, use MC and k2tog all around. With the last 10 sts, pull the yarn through with a yarn needle, tie off and pull yarn to inside of thumb.

Left Mitt:

Follow Chart C for 27 sts, PM, knit Chart B line 1. PM then continue to line 1 of Chart A. Move on to line 2 of Chart C, then Chart B, then Chart A. Continue working from the 3 charts in this order for 19 rows.

After 19 rows of working all charts put 19 sts of the thumb gusset on scrap yarn, and continue with Chart C and Chart A only, knitting in the round. Once you are done with the charts, put the first 11 sts on one needle and the second 11 sts on a second needle and work these off with a kitchener stitch.

Work left thumb same as right.

Weave in all ends and block.

Chart A - Hibernus Mittens



Chart C - Palm - Hibernus Mittens

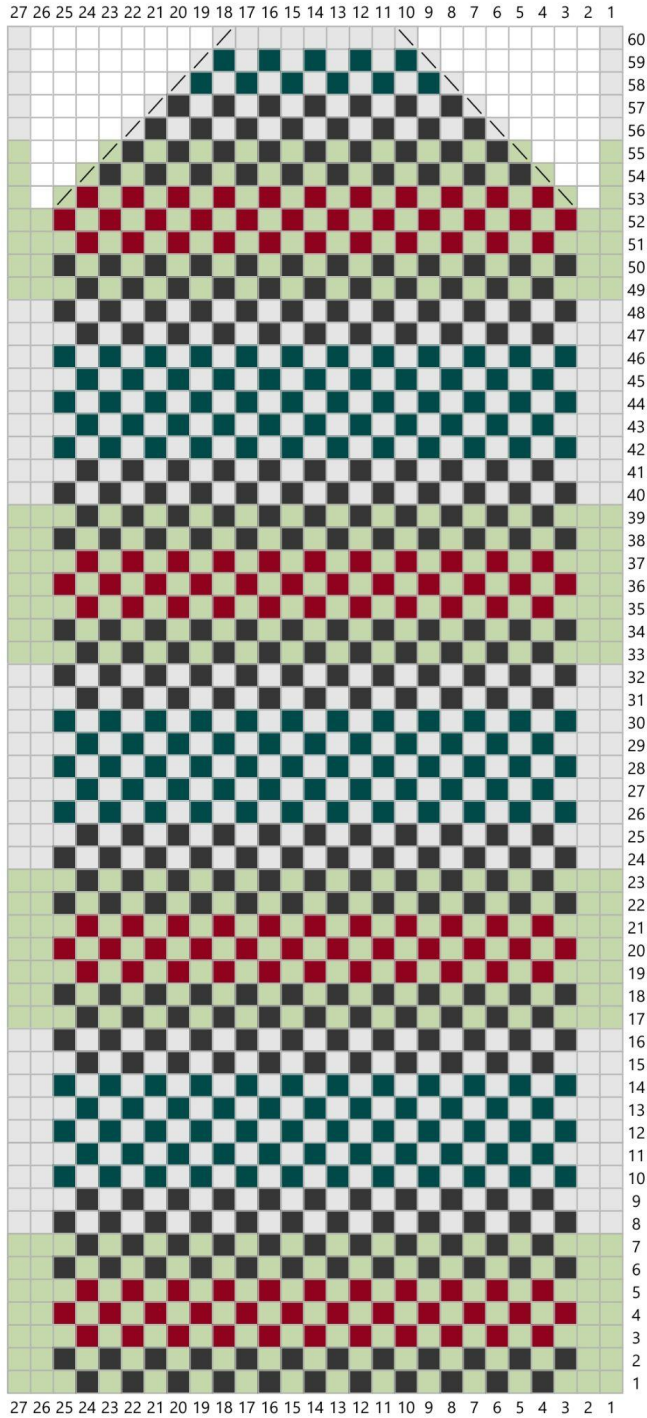
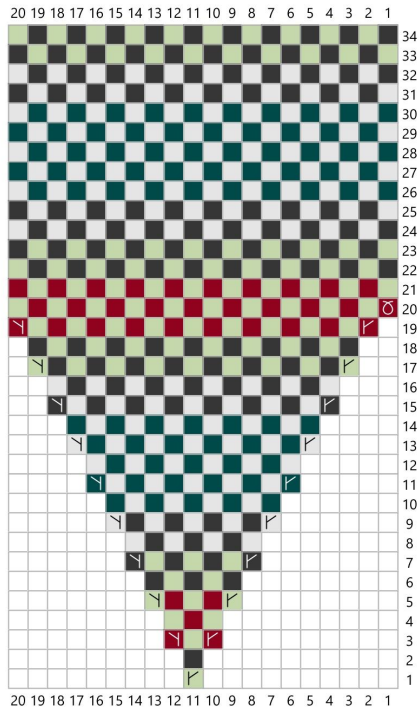


Chart B - Gusset/Thumb - Hibernus Mittens



Key

- Celadon Heather
- Rainforest Heather
- Finnley Heather
- Asphalt Heather
- Lingonberry Heather
- k2tog
- ssk
- m1 right leaning
- m1 left leaning
- pic up stitch
- no st