

Alpinia Hat



This hat fits heads that are 22-24 inches around.

Materials

Knit Picks Palette (fingering weight 100% wool yarn)

Cream (MC)	120 yds
Caper	25yds
Clover	20 yds
Tarragon	20 yds
Lichen	20 yds
Orange	11 yds
Tomato	11 yds
Hollyberry	11 yds

Supplies

Size 2 - 16" circular needles, Size 3 - 16" circular needles, and Size 3 dpns.
Yarn needle. Stitch markers.

Gauge with size 3 needles in pattern, in the round: 7 sts per inch.

Instruction

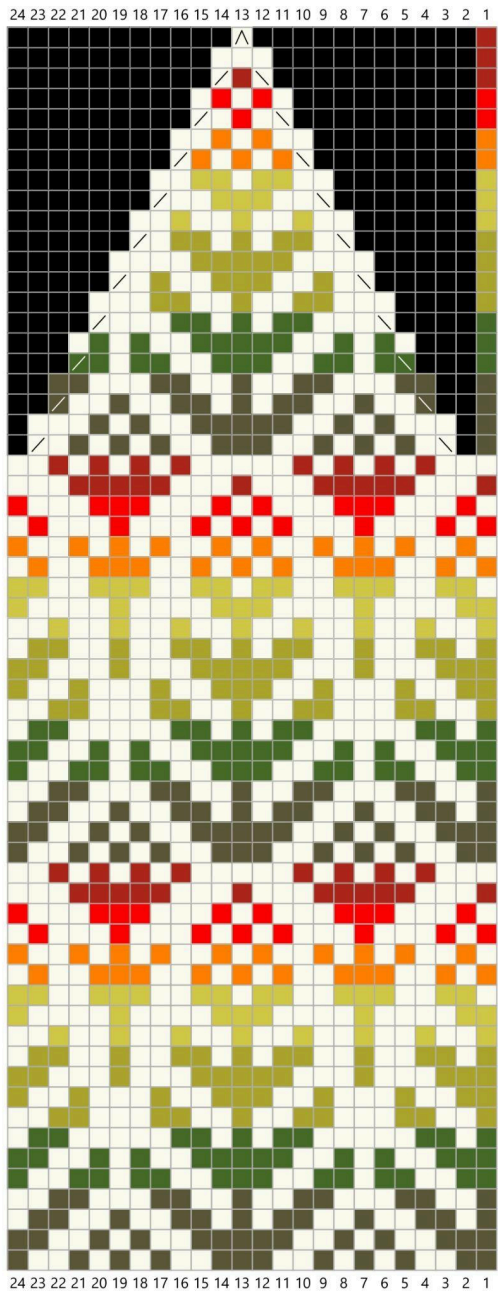
With Size 2 circular needles and using MC, C.O. 144 sts. PM and join in the round.

Row 1: (k2, p2) repeat to end of round.

Repeat row 1 until ribbing measures 1 $\frac{3}{4}$ inch.

Switch to Size 3 needles.

Start chart, repeat each row 6 times (144sts) Place markers as needed. Work your way up the chart then use the size 3 dpns when your work does not fit on the circulars. After you finish row 61, cut an 8 inch tail. Using the yarn needle, run the tail through the last 12 sts, tie off and pull tail through to the back of the hat. Weave in all ends. Block on a head form or balloon. If using a balloon, blow it up 1 inch smaller than the head size of the person planning to wear the cap.



Key

-  Cream
-  Caper
-  Clover
-  Tarragon
-  Lichen
-  Orange
-  Tomato
-  Hollyberry
-  k2tog
-  ssk
-  sl1, k2tog, psso
-  No Stitch