

Nth Mitts



This is charted pattern for fancy fingerless mitts knitted with 2 strands of color at a time. One size; fits a medium size hand snugly. Mitt measures 8 ½ inches from edge of cuff to finger opening and 3 ½ inches across knuckles

Materials

All yarns are Knit Pick Palette 100% wool,

Fingering weight:

Calypso Heather (MC)	70 yds
Finnley Heather	100 yds
Asphalt Heather	40 yds
Hollyberry	15 yds

Needles/Gauge

Size 2 dpns, Size 1 dpns

Gauge with Size 2 needles is: 7 sts per inch in the round in pattern.

Other Supplies

Yarn needle. Stitch markers. Scrap yarn.

Instructions

For both **Left and Right Mitt**: With size 2 needles and MC, C.O. 56 sts, PM, join in the round.

Row 1: with MC, K all sts.

Start Chart A. Knit this 5 row chart for the corrugated ribbing.

Row 7: with MC, k all sts.

Start Chart B. Each row is repeated 4 times per round.

When Chart B is complete, knit one round plain with MC.

Switch to Size 1 needles and work Chart A. Once this 5 row corrugated ribbing is complete, switch back to Size 2 needles and knit one round plain with MC.

From here on, the Left and Right mitt are constructed differently. For the **Right** mitt: work the chart (from the right to left, bottom up) until you get to stitch 29. INSERT the gusset here. So as you knit line one of Chart C, you will insert line one of Chart E *between* stitches 29 and 30. Use stitch markers here and anywhere else along the chart to help you keep track of where you are in the pattern.

A note about knitting the gusset: notice that the increases are made on the odd lines. On line 1 you have 1 stitch of the gusset, on line 3 there are 3 stitches, on line 5 there are 5 stitches, and so on.

After you knit Charts C and E to line 19 put the 19 gusset stitches on a piece of scrap yarn. As you knit line 20 you will join the work after stitch 29 and continue working in the round until you finish the chart.

Once you complete Chart C, knit one round plain with MC.

Work Chart A. Next, with MC, knit one more round plain and then bind off.

Thumb: place the 19 sts onto size 2 needles. With MC, pick up one stitch from the mitten body, now you have 20 stitches on your needles. With MC knit one round plain. Then work Chart A. Next, with MC, knit one more round and then bind off.

For the **Left** Mitt: start with cuff same as right. Work the Chart D (from the right to left, bottom up) until you get to stitch 27. INSERT the gusset here. So as you knit line one of Chart D, you will insert line one of Chart E *between* stitches 27 and 28. Continue working Chart D and E. After line 19 put the 19 gusset stitches on scrap yarn. As you knit line 20, join the work and knit in the round until the end of the chart.

Once you complete Chart D, knit one round plain with MC. Work Chart A. Next, with MC, knit one more round plain and then bind off.

Work the thumb as you did for the other mitten.

Weave in all ends and block.

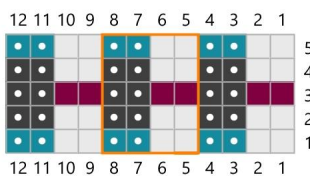


Chart A

Key

- Calypso Heather
- Finnley Heather
- Asphalt Heather
- Hollyberry
- Repeat section
- purl
- Insert thumb Gusset
- m1 right leaning
- m1 left leaning
- No Stitch



Chart B

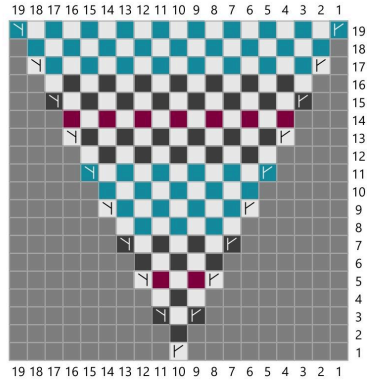


Chart E

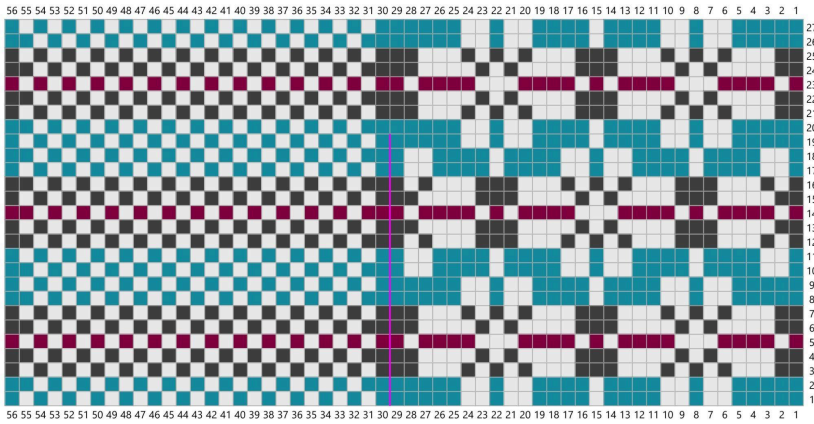


Chart C - right mitt

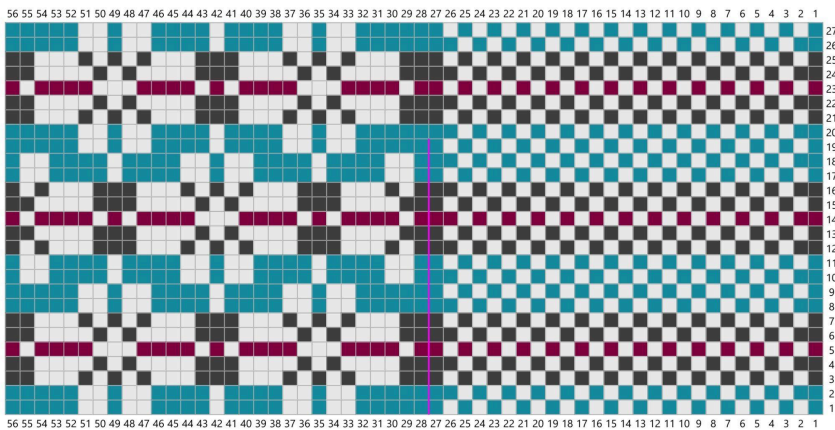


Chart D - left mitt