

# Adelinea Mitts



Adelinea Mitts are fancy Fair Isle fingerless gloves in two sizes: S/M and M/L. Laying flat size S/M are 3 ¼ inches across knuckles and size M/L are 3 ½ inches across knuckles. Both sizes measure 10 ¼ inches from cuff edge to finger openings.

## Materials

All yarns are Knit Pick Palette 100% wool,  
Fingering weight:

MC1 Coriander Heather	56, 60 yds
MC2 Oyster Heather	41, 46 yds
MC3 Cream	36, 41 yds
CC1 Larch Heather	46, 61 yds
CC2 Roobois Heather	46, 61 yds
CC3 Salsa Heather	15, 20 yds

## Needles/Gauge

Size 2 dpns

Gauge with Size 2 needles is: 7 sts per inch in the round in pattern.

## Other Supplies

Yarn needle. Stitch markers. Scrap yarn.

## Instructions

For both **Left and Right Mitt**: With size 2 needles and MC1, C.O. 56, 60 sts, PM, join in the round.

Round 1: with MC1, K all sts.

Start Ribbing 1 chart. Knit this 9 row chart, repeating the stitches in the red box, for the corrugated ribbing.

Once you are done with the ribbing, knit 2 rounds plain with MC1.

Start Chart A and work it twice per round.

When Chart A is complete, knit 2 rounds plain with MC1.

Work Ribbing 1 chart for the 9 rows of corrugated ribbing.

When Ribbing 1 chart is complete, knit 2 rounds plain with MC1.

From here on, the Left and Right mitt are constructed differently. The right mitt is constructed in this order: Chart A, Chart C, then Chart B. The left mitt is constructed in this order: Chart B, Chart C, then Chart A. Only Chart A has a size difference. Use Chart B and C as is for both sizes.

For the **Right** mitt: knit line 1 of Chart A, then line 1 of Chart C, then line 1 of Chart B. Place markers between charts to keep your work orderly. Continue to line 2 and work in this order until you get to line 19.

A note about knitting the gusset: notice that the increases are made on the odd lines. On line 1 you have 1 stitch of the gusset, on line 3 there are 3 stitches, on line 5 there are 5 stitches, and so on.

After you knit Charts A, C, and B to line 19 put the 19 gusset stitches on a piece of scrap yarn. As you knit line 20 you will join the work and continue with Charts A and B until the end.

Once you complete Charts A and B, knit 2 rounds plain with MC1.

Work Ribbing 1. Next, with MC1, knit one more round plain and then loosely bind off.

Thumb: place the 19 sts onto size 2 needles. With MC1, pick up one stitch from the mitt body, now you have 20 stitches on your needles. With MC1 knit one round plain. Then work Ribbing 2. Next, with MC1, knit one more round and then loosely bind off.

For the **Left** mitt: knit line 1 of Chart B, then line 1 of Chart C, then line 1 of Chart A. Place markers between charts to keep your work orderly. Continue to line 2 and work in this order until you get to line 19.

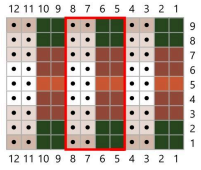
After you knit Charts B, C, and A to line 19 put the 19 gusset stitches on a piece of scrap yarn. As you knit line 20 you will join the work and continue with Charts B and A until the end.

Once you complete Charts A and B, knit 2 rounds plain with MC1.

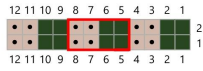
Work Ribbing 1. Next, with MC1, knit one more round plain and then loosely bind off.

Work the thumb as you did for the other mitt.

Weave in all ends and block.



Ribbing 1



Ribbing 2

Key

- MC1 Coriander Heather
- MC2 Oyster Heather
- MC3 Cream
- CC1 Larch Heather
- CC2 Rooibos Heather
- CC3 Salsa Heather
- purl
- Repeat
- m1 right leaning
- m1 left leaning
- No Stitch

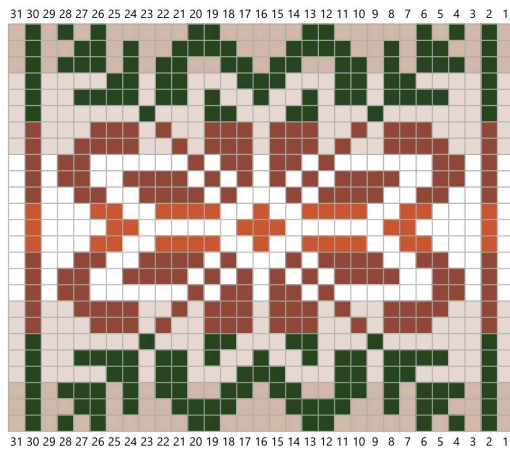


Chart A size S/M

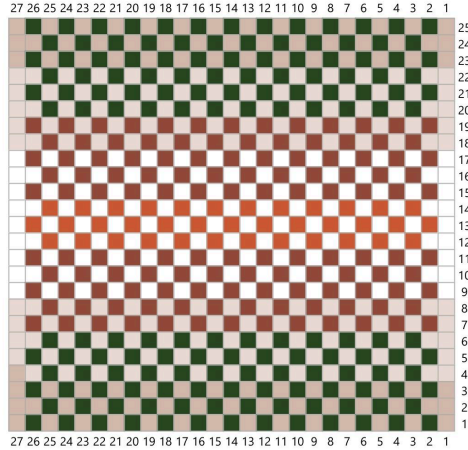


Chart B

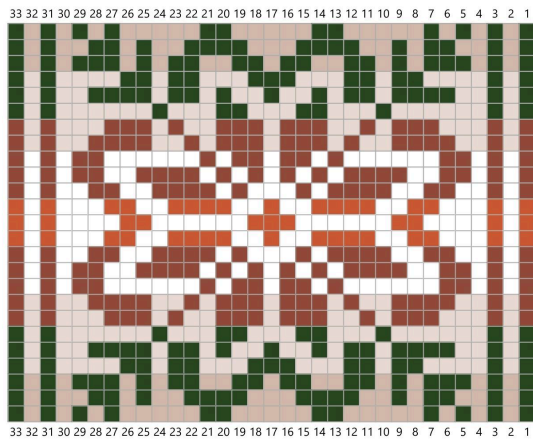


Chart A size M/L

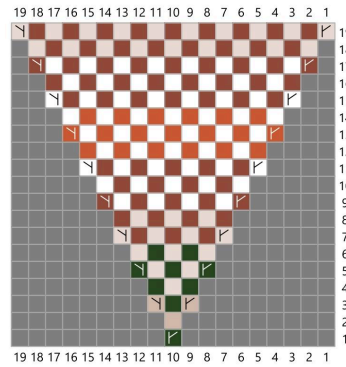


Chart C